



BUILDING ON SUCCESS - SCHOOLS FOR THE NEXT GENERATION
MEASURE K BOND PROGRAM

Measure K Bond Program Project Updates

COC Meeting – December 16, 2010

- I. New 6-8 Middle School #1 (at former GTE site)
- II. New High School #1 – Early College and Technical School (ECATS)
- III. Other Major Projects
- IV. District-Wide Projects
- V. Master Program Schedule
- VI. Facility Standards
- VII. Program Successes

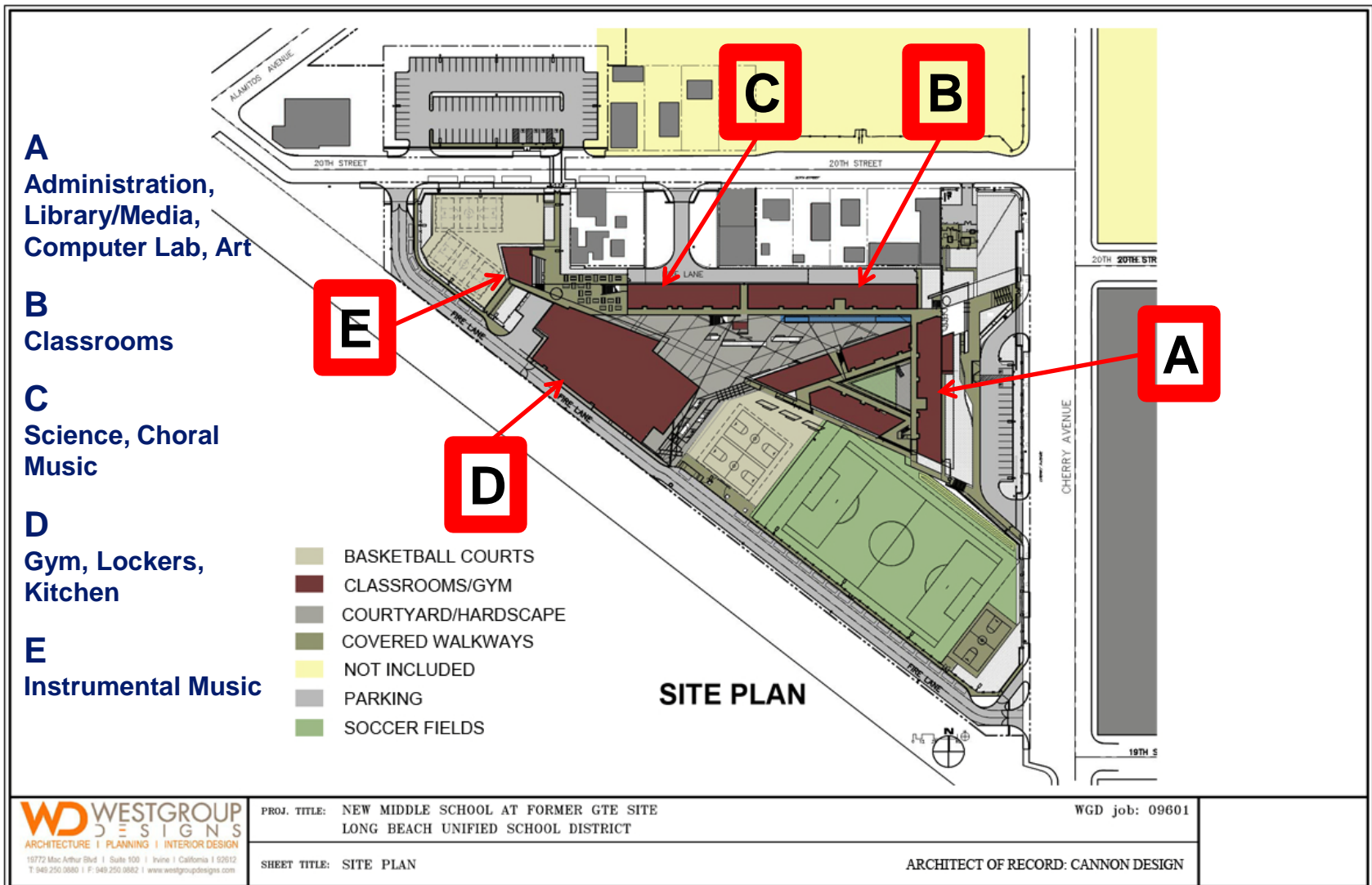
I. New 6-8 Middle School #1 (GTE Site)

- 6-8 Middle School in the Poly Planning Area
- Site Located at E. 20th Street/Cherry Avenue (8+ acres) – Former GTE Site
- 800 Students (840 capacity)
- 31 Classrooms (89,288 square feet)
- Library/Media Center, Gymnasium, Multipurpose Room, Other Support Facilities including a Soccer Field and Hard Court Areas
- Total Project Cost - \$58.14M
- Expended to Date - \$23.6M



- Construction Budget: \$42.0M
- State Funding of \$12.9M Under Critically Overcrowded Schools (COS) Program
- Construction Contract Awarded July 7, 2009
- Notice to Proceed Issued on July 30, 2009
- Anticipated School Opening – September 2012

I. New 6-8 Middle School #1 (GTE Site)



I. New 6-8 Middle School #1 (GTE Site)

Progress Photos

Cherry Avenue entrance
and visitor parking lot



View from soccer field looking towards
Building A, with Building B (Gym) on left



Main entrance (Building A)

I. New 6-8 Middle School #1 (GTE Site)

Progress Photos

Building D (Gym and Multi Purpose Room) roof



View from Building A roof looking towards Building D (Gym and Multi Purpose Room)



Building D (Gym) entrance

I. New 6-8 Middle School #1 (GTE Site)

Progress Photos

Building D – Gym bleachers



Building D – stage from Multi Purpose Room



Building D – locker rooms



I. New 6-8 Middle School #1 (GTE Site)

Progress Photos



View of Building E from outdoor lunch area



View from lunch canopy looking east towards stairs and Building C



Building D roof mechanical

I. New 6-8 Middle School #1 (GTE Site)

Progress Photos



View of
Building A
from Gym
roof



Typical
classrooms



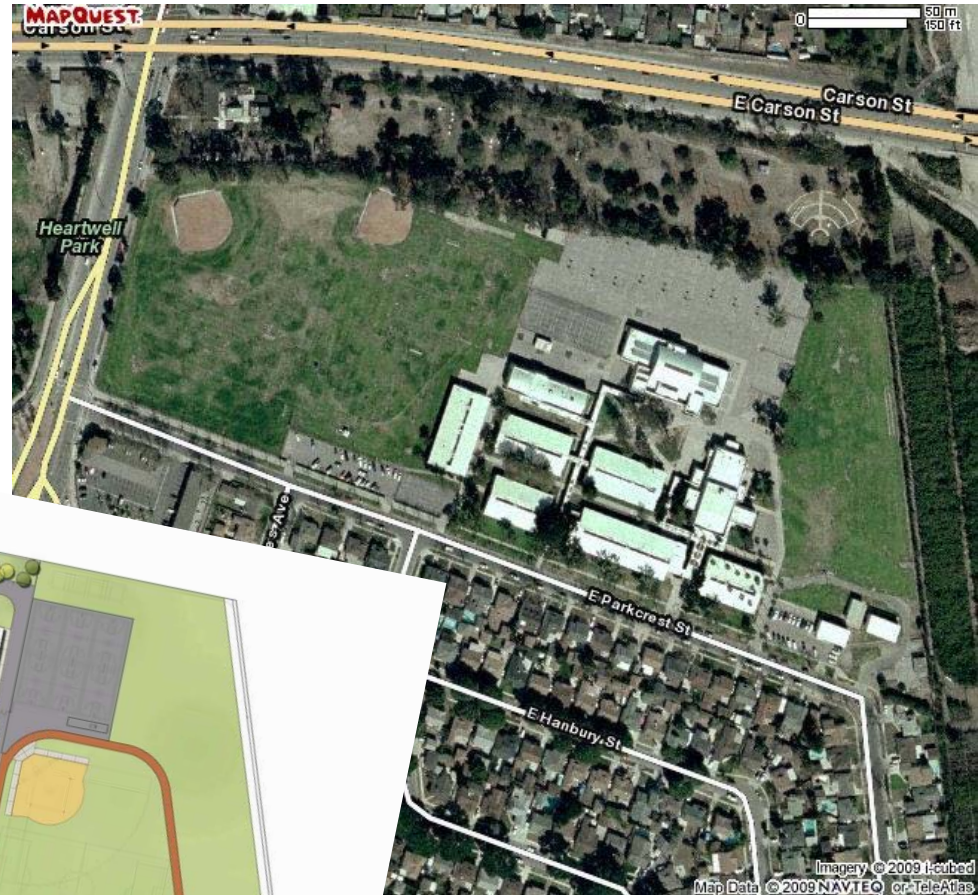
Building A
interior
courtyard



Building A –
Library
insulation

II. New High School #1 (ECATS) Site Conversion

DeMille Middle School
(Current Site Lay-Out)



New High School #1 (ECATS)
(Site Lay-Out)

II. New High School #1 (ECATS)

Early College and Academic Technical School

- 1,080 Students in Grades 9th – 12th
- 7 New Buildings (Administration, North Academy, Science, Food Service, Gym, South Academy, Lecture Hall)
- 43 Total Classrooms
- Self-Contained Athletics/Extra-Curricular Programs



- Grant Applications (3):
Health/Medical, Engineering Design
and Public Service Still Pending
Decision
- Budget Summary:
 - Estimated Construction Cost = \$75.5M
 - Total Project Budget = \$100.65M
 - Expended to Date = \$5.0M

II. New High School #1 (ECATS)

- Demo and Abatement Work – Started on 11/10/10
- Well Water Line Relocation Work – To Start on 2/1/11
- Anticipated Schedule

- Demo & Abatement Construction

11/10/10 – 3/7/11

- Well Water Line Relocation Construction

2/1/11 – 3/31/11

- New Campus Building Construction

Construction Contract Approval

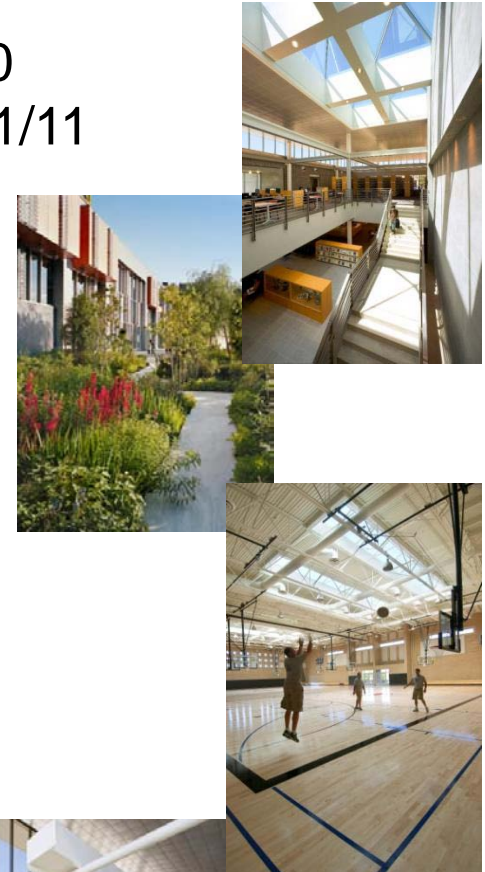
5/17/11

Construction

5/20/11 – 3/20/13

- Target School Opening Date

9/3/13

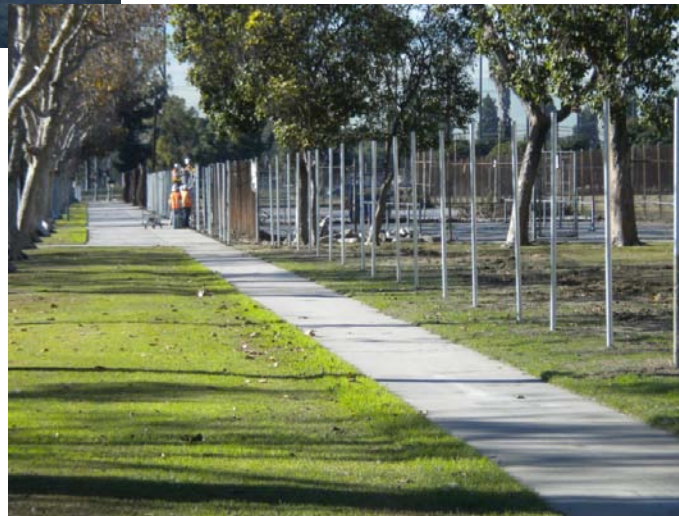


II. New High School #1 (ECATS)

Demo and Abatement Photos



Portable removal



Perimeter fence
construction



II. New High School #1 (ECATS)

Demo and Abatement Photos

Window
removal



Site conditions near portables

Fixtures/Furniture
removal



III. Other Major Projects

- Roosevelt Elementary School (*Area E*)
- Jordan High School Renovation (*Area A*)
- Cabrillo High School Pool (*Area D*)
- New High School #2 – Browning Site (*Area E*)
- New High School #3 – Jordan Academy (*Area A*)
- New High School #4
- Hill Middle School (*Area F*)
- Hamilton Middle School (*Area A*)
- Bancroft Middle School (*Area B*)
- Millikan High School (*Area C*)
- Avalon K-12 (*Area G*)



III. Other Major Projects



Roosevelt Elementary School

- Complete Rebuild
- Architect – Ghataode Bannon Architects, LLP
- Lease-Leaseback Builder Selection in Process
- Master Planning Activities Have Begun
- Estimated Total Project Cost = \$44.9M
- Target Opening = Fall 2014



Jordan High School Renovation

- Major Renovation and 6 AB300 Buildings
- Includes Planning for Jordan Freshman Academy
- Coordinating with North Long Beach Initiative Committee
- Architectural Design Team Selection in Process
- Estimated Total Project Cost = \$157.6M
- Target Opening = Fall 2015



Cabrillo High School Pool

- Addition of Pool and Associated Support Facilities
- Architect – PJHM Architects Inc.
- Lease-Leaseback Builder Selection in Process
- Master Plan Design Options Being Developed
- Estimated Total Project Cost = \$16.4M
- Target Opening = Winter 2012



New High School #2 (Browning Site)

- New High School with Projected Enrollment of 800 Students; Curriculum Around Academies and Self-Contained Athletic and Extra-Curricular Programs
- Site Due Diligence Activities Underway
- Architectural Design Team Selection in Process
- Total Estimated Project Budget = \$63.2M
- Target Opening – Fall 2015

IV. District-Wide Projects



- AB300 Buildings
- Access Compliance
- Deportablization
- DSA (Division of State Architect) Certification and Close-Out
- Building System Improvements
- Pilot Projects
- Technology Upgrades

IV. District-Wide Projects

AB300 Buildings

Newcomb Academy (K-8)

- Major Renovation, All Permanent Buildings on AB300 Category 1 Building List
- Architect – Rachlin Architects Incorporated
- Lease-Leaseback Builder Selection in Process
- Master Plan Design Has Begun
- Estimated Total Project Cost = \$38M
- Target Opening = Spring 2014



IV. District-Wide Projects

Access Compliance



- First On-Call Project RFP to be Issued this Month
- Access Compliance Consultant Services
 - Request for Qualifications to be Released in January

IV. District-Wide Projects

Deportablization

2010 Phase 1 DOH Removal



- Remove DOH (Department of Housing) Buildings at 14 Sites
 - Addams E.S.
 - Grant E.S.
 - Hamilton M.S.
 - Harte E.S.
 - Keller E.S.
 - Kettering E.S.
 - Long Beach School for Adults
 - McKinley E.S.
 - Robinson K-8
 - Signal Hill E.S.
 - Stephens M.S.
 - Webster E.S.
 - Willard E.S.
 - Wilson H.S.
- Lionakis Has Begun Phase 2 Design Work
- Total Estimated Project Cost = \$503,000
- Anticipated Bidding – February 2011
- Anticipated Removal – April through June 2011

IV. District-Wide Projects



Technology Upgrades 2010 Core Switch and Uninterrupted Power Supply (UPS) Replacement Project

Project Sites (52 campuses)

- | | | | | |
|------------------------------------------------------------------------------------------------------------------------------------------------------------------------------------------------------------------------------------------------------------------------------------------------------|-------------------------------------------------------------------------------------------------------------------------------------------------------------------------------------------------------------------------------------------------------------------------------------------------------------------------|------------------------------------------------------------------------------------------------------------------------------------------------------------------------------------------------------------------------------------------------------------|---------------------------------------------------------------------------------------------------------------------------------------------------------------------------------------------------------------------------------------------------------------------|-------------------------------------------------------------------------------------------------------------------------------------------------------------------------------------------------------------------------------------------------------------------------------|
| <ul style="list-style-type: none"> • Addams E.S. • Alvarado E.S. • Avalon • Bancroft M.S. • Barton E.S. • Birney E.S. • Bixby E.S. • Bryant E.S. • Buffum E.S. • Burbank E.S. • Burcham K-8 | <ul style="list-style-type: none"> • Burnett E.S. • Burroughs E.S. • Butler M.S. • Cabrillo H.S. • Edison E.S. • Franklin Classical M.S. • Garfield E.S. • Grant E.S. • Hamilton M.S. • Harte E.S. • Hill M.S. | <ul style="list-style-type: none"> • Holmes E.S. • Hoover M.S. • Hudson K-8 • Hughes M.S. • International E.S. • Jefferson Leadership Academy • Joseph E.S. • Lafayette E.S. | <ul style="list-style-type: none"> • Lincoln E.S. • Lindberg M.S. • Lindsey M.S. • MacArthur E.S. • McKinley E.S. • Monroe K-8 • Muir E.S. • Riley E.S. • Robert E. Lee E.S. | <ul style="list-style-type: none"> • Robinson K-8 • Roosevelt E.S. • Signal Hill E.S. • Stephens M.S. • Stevenson E.S. • Washington M.S. • Webster E.S. • Whittier E.S. • Willard E.S. |
|------------------------------------------------------------------------------------------------------------------------------------------------------------------------------------------------------------------------------------------------------------------------------------------------------|-------------------------------------------------------------------------------------------------------------------------------------------------------------------------------------------------------------------------------------------------------------------------------------------------------------------------|------------------------------------------------------------------------------------------------------------------------------------------------------------------------------------------------------------------------------------------------------------|---------------------------------------------------------------------------------------------------------------------------------------------------------------------------------------------------------------------------------------------------------------------|-------------------------------------------------------------------------------------------------------------------------------------------------------------------------------------------------------------------------------------------------------------------------------|

COMPLETE
 9/21/10 - ALL FINAL TESTING/INSPECTIONS
 10/26/10 - COMPLETED CLOSE-OUT

Measure K and E-Rate Funding

Total Project Cost = \$1,152,612

E-Rate = \$413,024 (36%)

Measure K = \$739,588 (64%)

IV. District-Wide Projects

Building System Improvements 2010 Boiler Replacement

- 24 Boilers at 10 Sites

- Bancroft M.S.
- Gant E.S.
- Kettering E.S.
- Lakewood H.S.
- Long Beach School for Adults
- Lowell E.S.
- McKinley E.S.
- Millikan H.S.
- Tincher Preparatory School
- Wilson H.S.



- Ruhnau Ruhnau Clarke Has Completed Phase 1 Assessment
- Total Estimated Project Cost = \$3.2M
- Anticipated Bidding – January 2012
- Anticipated Replacement – Summer 2012

IV. District-Wide Projects



Building System Improvements 2010 Phase 1 Lighting and Ceiling Replacement

- 42 Sites Being Assessed During Phase 1
 - Barton E.S.
 - Birney E.S.
 - Butler M.S.
 - Bryant E.S.
 - Burcham K-8
 - Burroughs E.S.
 - Cleveland E.S.
 - Colin Powell M.S.
 - Cubberly
 - Edison E.S.
 - Emerson E.S.
 - Franklin Classical M.S.
 - Fremont E.S.
 - Gant E.S.
 - Grant E.S.
 - Gompers E.S.
 - Hoover M.S.
 - Hughes M.S.
 - Jefferson Leadership Academy
 - Kettering E.S.
 - Lafayette E.S.
 - Lakewood H.S.
 - Lincoln E.S.
 - Lindberg M.S.
 - Longfellow E.S.
 - Los Cerritos E.S.
 - Lowell E.S.
 - Madison E.S.
 - Mann E.S.
 - McKinley E.S.
 - Monroe K-8
 - Naples E.S.
 - Patrick Henry E.S.
 - Polytechnic H.S.
 - Robert E. Lee E.S.
 - Rogers M.S.
 - Signal Hill E.S.
 - Stanford M.S.
 - Tincher Preparatory School
 - Washington M.S.
 - Whittier E.S.
 - Wilson H.S.
- Architectural Design Team Selection in Process
- Total Estimated Project Cost = to be determined
- Anticipated Replacement – Summer 2012 (Phase 1), Summer 2013 (Phase 2, if determined to be completed)

- 25

IV. District-Wide Projects

Pilot Projects

Underway:

Grass and Irrigation Projects at New 6-8 Middle School #1 (GTE Site)

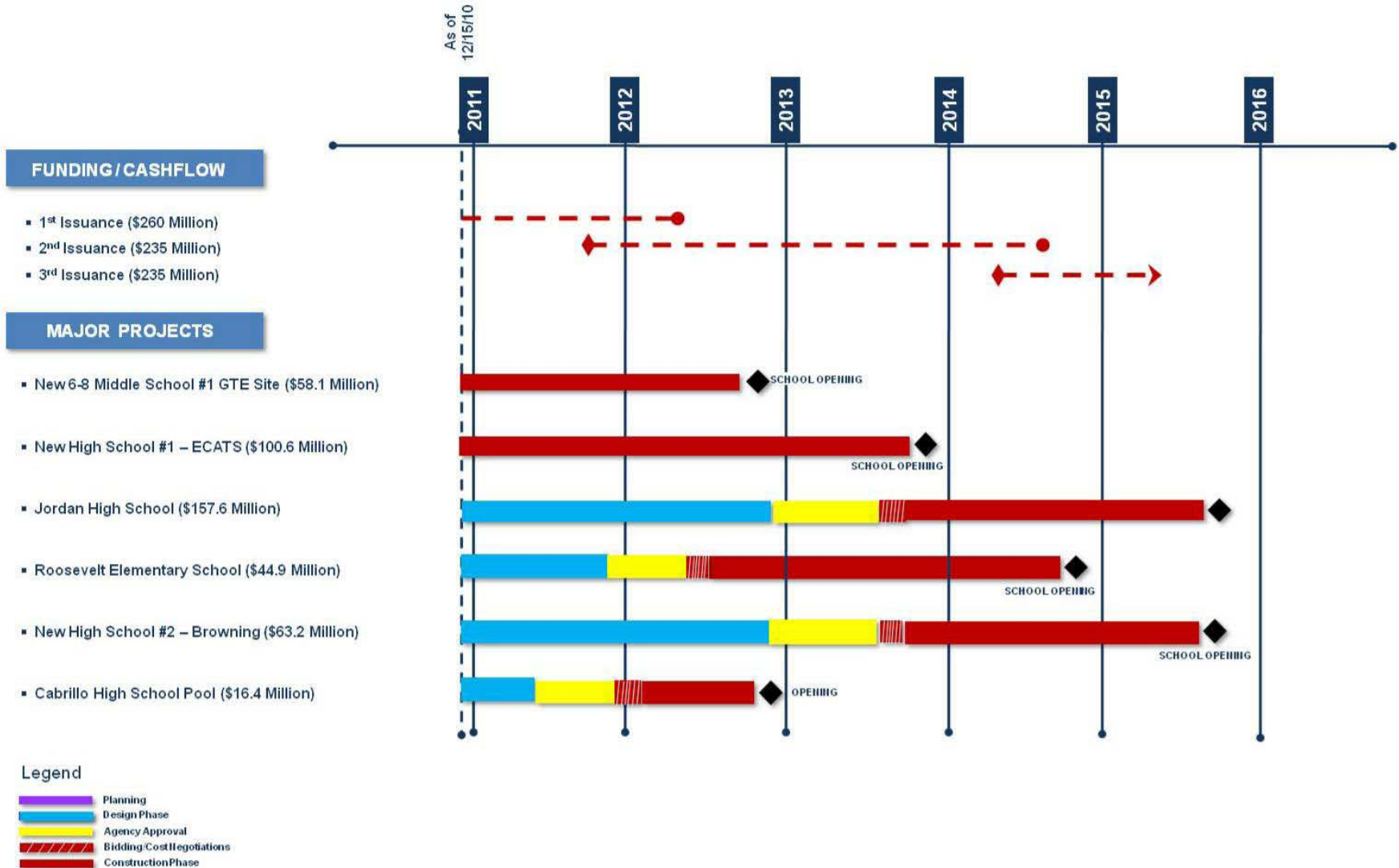


Photovoltaics at New High School #1 (ECATS)



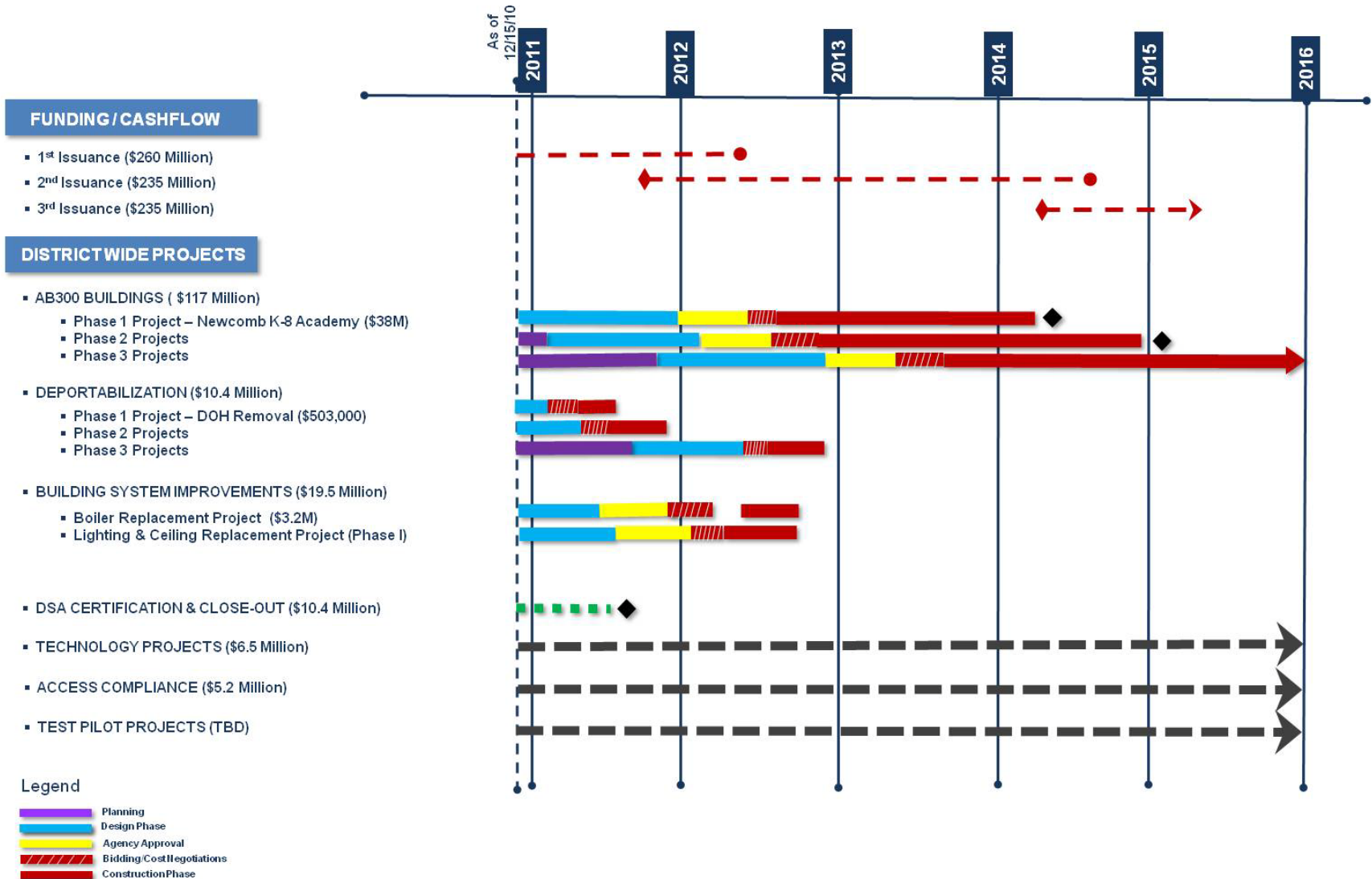
V. Master Program Schedule

Major Projects – Five Year Look Ahead Schedule



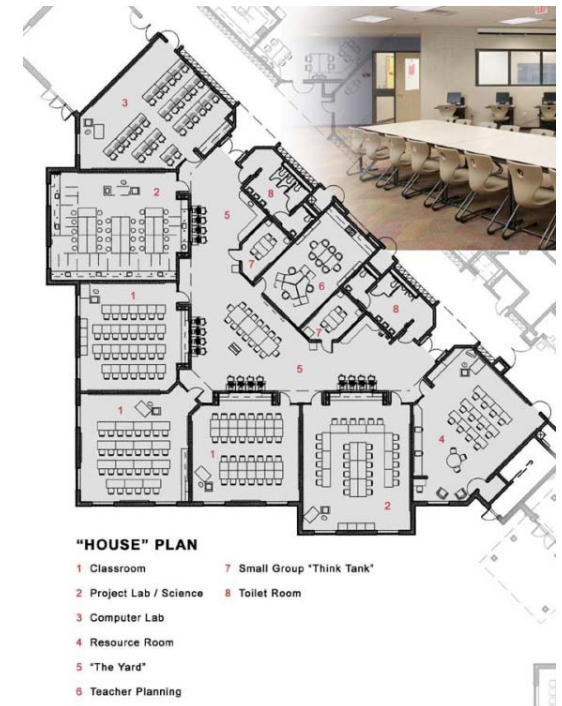
V. Master Program Schedule

District-Wide Projects – Five Year Look Ahead Schedule



VI. Facility Standards

- Classroom Technology Standards Done
- Educational Design Standards Complete
- Architect - Dougherty + Dougherty
Completing Facility Design Standards



VII. Program Successes

October – December 2010

(Program Successes Reported at Each COC Meeting Since December 2009)

- **Efficiencies and Best Practices**
 - Protocols and Procedures Development – Budget, Accounting and Project Management
 - All Facilities Staff and Consultant Orientation
 - Project Manager Training and Other Staff /Consultant Training
 - Start of New High School #1 (ECATS) Demolition and Abatement Work
 - Addition of Communications Coordinator
 - Performance and Financial Audits Completed
- **Measure K Bond Program Savings**
 - Funds Received from State - \$12,903,722

