



UPDATE

Winter 2013

Long Beach Unified School District



IN THIS ISSUE

Districtwide Wireless Project Under Way

How Wi-Fi Impacts Learning at Wilson High

Two Small High Schools in Planning Stages

\$40M Renovation Set for Renaissance HS

Bond Oversight Committee Chair Serves Community

Keeping It Local

Quick Takes

COMING EVENTS

Jordan High School Renovations
Public Meeting
December 16, Monday 5:30 p.m.
Auditorium
6500 Atlantic Ave., Long Beach

Citizens' Bond Oversight Committee
December 19, Thursday 5:00 p.m.
LBUSD Administrative Building
Community Room
1515 Hughes Way, Long Beach

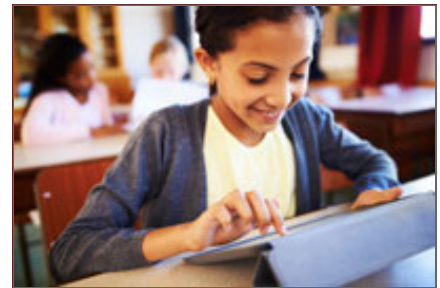
DID YOU KNOW?

- The Measure K Bond Oversight Committee consists of volunteers who receive no monetary compensation for their service.
- A new small high school on the Butler Middle School campus is being planned.
- Jordan Freshman Academy will be converted to a small

Districtwide Wireless Project Under Way

Thanks to Measure K, every school in the Long Beach Unified School District will have an operational wireless technology network by the fall of 2014.

Installation has begun at high schools and some middle schools, with the [\(read more\)](#)



How Wi-Fi Impacts Learning at Wilson High

At one of the first schools in the district to be equipped with a campus-wide wireless network, the learning environment is already beginning to reflect the new technology.

The Wilson High campus was outfitted with wi-fi last [\(read more\)](#)



Two Small High Schools in Planning Stages

Following the successful launch this year of McBride High, the district's first new high school in a generation, two more small high schools will be opened in the Long Beach Unified School District in the next few years.

The Board of Education recently approved a plan to [\(read more\)](#)



\$40 Million Renovation Set for Renaissance High

Renaissance High School for the Arts, a visual and performing arts magnet, will undergo a major facelift, including building renovations and removal of all portable structures.

thematic high school.

- The expenses covered by Measure K are set by law and are strictly limited to school repairs and construction, as well as technology upgrades.



Questions?
Contact Vivien Hao
vhao@lbschools.net

The school serves about 500 students in grades 9 to 12 and is the home of the [\(read more\)](#)



Bond Oversight Committee Chair Serves Community

Dede Rossi was appointed by Superintendent Christopher J. Steinhauser to serve on the Measure K Citizens' Bond Oversight Committee in September 2011. Now in her second and final two-year term as a community-at-large [\(read interview\)](#)



KEEPING IT LOCAL

Platt Security: Fifty-Five Years and Counting



In the summer of 1958, a local police sergeant was asked to provide security for an Elvis Presley concert at the Long Beach Municipal Auditorium. He and a few of his off-duty officer buddies earned \$20 each for the night's work.

On that night, a new business was born. Fifty-five years later, Platt Security is [\(read more\)](#)

QUICK TAKES



Roosevelt Elementary

Construction has begun at the Roosevelt Elementary site, where a brand new school is being built with Measure K funds.

[More project information.](#)



Newcomb Academy

A rendering of the new Newcomb Academy K-8 campus shows how the campus will look when it is completed in fall 2015. Construction will start in December.

[More project information.](#)

This is a newsletter published by the Long Beach Unified School District - Measure K Bond Program Office.
2425 Webster Avenue, Long Beach, CA 90810 | (562) 997-7553 | measurekinfo@lbschools.net

[Long Beach Unified School District Measure K Website](#)

[Click here to subscribe.](#)